

# WILLIAMSBURG Health FOUNDATION



## OUR VISION

Individuals making healthy choices in a  
community with health opportunities for all.



## LETTER FROM THE Chair of the Board of Trustees

Your local health foundation, the Williamsburg Health Foundation, this past year continued its strong support of local programs for physical and behavioral health and wellness for all ages in the community. But 2018 also brought a new unique opportunity, as a result of the decision by the Virginia General Assembly to expand Medicaid coverage to previously uninsured persons, beginning January 2019.

To prepare for this significant change, the Foundation cooperated with local governments, our remarkable hospital and health systems, our wonderful grantee clinics, and local businesses of all kinds, to spearhead and partially fund a number of initiatives:

- a major series of community outreach and communications
- training for those who wish to assist individuals with applications
- a working group for healthcare providers to understand how they would be affected
- a series of visits from outside experts to advise our grantee clinics on their next steps

Our Foundation's dedicated and talented staff played a critical role this past year in helping to mobilize community resources and take advantage of this new opportunity to increase access to health care for so many people at one time.

As shown in this report, the Foundation provides substantial grant funding to the four free and charitable clinics in the area. In 2018, grantee clinics had approximately 7,600 uninsured patients. Based on our data, 73% or approximately 5,500, could be eligible in 2019 for Virginia Medicaid just based on income alone. Make no mistake, however. **Our four free clinics still need support from all** of us because there are many other people who still desperately need the services provided by the clinics.

Not only has Virginia Medicaid expansion been a major undertaking this year, the Foundation's support continues to address the burden of chronic disease in our area. Our data show that diabetes, heart disease, obesity and opioid abuse are major health issues, thus the Foundation developed specific programs – such as the Chronic Care Collaborative and the School Health Initiative program (SHIP). Please read about the Foundation's efforts in promoting lifelong wellness as well as strengthening our local not-for-profits who do the hard work every day of improving health. We welcome your comments and feedback.

Louis F. Rossiter  
*Chair, Board of Trustees*

## LETTER FROM THE President and CEO

In this report, we present our work for the 2018 calendar year. We publish our annual report in *Next Door Neighbors* magazine so we can share with the community at large all the good work we support to achieve improved health in Greater Williamsburg.

We provide you with this account of all the grants we made, annual awards we gave, and strategic goals which guide our work.

2019 has been a year of change, and I want to thank all the organizations and individuals in our community who have worked to make the public policy change of Medicaid Expansion a reality for individuals who need and qualify for this insurance. We hear stories of lives changed by this new law. Here's one of my favorites:

*A mom had no insurance and suffered from debilitating migraine headaches. Due to the pain, she missed work often and was frequently unable to read to or play with her child. With Medicaid, she was able to get the diagnosis and treatment she needed to diminish her headaches. As a result, she became a more involved parent to her child and was able to work more hours — both of which gave her joy.*

In 2020, the work of Medicaid Expansion shifts from getting people enrolled to ensuring they understand and know how to access all of their benefits. Our work is not done. It has only begun.

Also in 2020, Williamsburg Health Foundation begins the process of strategic planning. Informed by the Status of Citizen Health Report, the Community Needs Assessment, and other data and insights, our board will grapple with the direction and priorities as we seek to build increasingly effective systems to undergird the health of our community.

I am honored to lead this organization. I continue to be amazed by all the good work done every day to make all our lives healthier and happier. As always, we invite you to be part of this work. Support a local nonprofit and the creation of a healthier community, make healthy choices, advocate for the community health, and encourage healthy behavior by example. Each of us matters to the health of this community.



Carol L. Sale, RN, MSN  
President & CEO





# WHO QUALIFIES FOR VIRGINIA MEDICAID?



## CHILDLESS ADULT

### Before Expansion

Not eligible

### After 2019 Expansion

Eligible with annual income at or below \$16,754



## PARENT (FAMILY OF 3)

### Before Expansion

Eligible with annual income at or below \$6,900

### After 2019 Expansion

Eligible with annual income at or below \$28,677



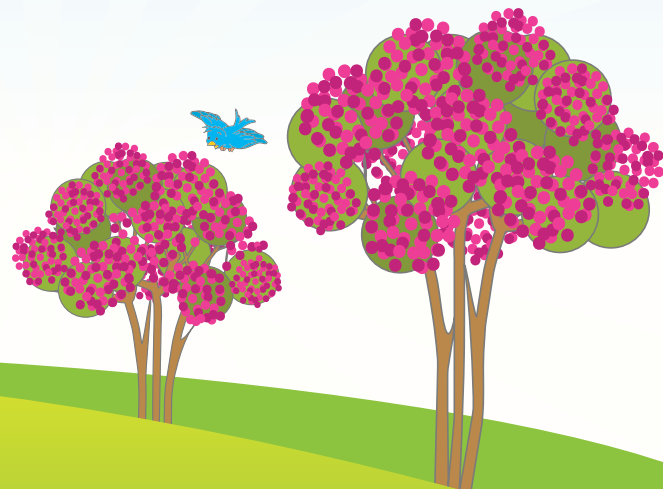
## PERSON WITH DISABILITY

### Before Expansion

Eligible with annual income at or below \$9,700

### After 2019 Expansion

Eligible with annual income at or below \$16,754





**Front l-r:** *Harold Marioneaux, Jr., DDS, Dental Hygiene Director at Thomas Nelson Community College; Timothy K. Johnston, DDS, Norge Dental Center; Clarence Wilson, Chair of the Annual Awards Committee and Treasurer, Williamsburg Health Foundation (WHF)*  
**Back l-r:** *Jim Golden, Board Chair, WHF; Sarah Bedard Holland, CEO of Virginia Oral Health Care Coalition; Bill Mann, MD, Executive Medical Director, Olde Towne Medical and Dental Center; Carol L. Sale, President and CEO, WHF; Paul F. Scott, Executive Director, Child Development Resources*

## WILLIAMSBURG HEALTH FOUNDATION'S 2018 ANNUAL AWARDS Virginia Oral Health Coalition and Local Partners

In October 2018, WHF presented its annual awards with a focus on oral healthcare and Virginia Oral Health Coalition which raises awareness about the need for oral health delivery systems in Virginia. The event also gave special recognition to local provider groups that provide no-cost or low-cost oral health. These organizations include Child Development Resources, Lackey Clinic, Norge Dental Center, Olde Towne Medical & Dental Center, and Thomas Nelson Community College.

In a video featured at the breakfast and available online at [williamsburghealthfoundation.org](http://williamsburghealthfoundation.org), experts explained the critical connection between oral health and overall physical and mental health to total well-being as well as the need to examine the current limited reimbursement structures for oral healthcare.

Harold Marioneaux, Jr., DDS, Dental Hygiene Director at Thomas Nelson Community College, pointed out gaps in public insurance systems designed to care for Americans and their health. "Dentistry is not part of the Affordable Care Act. If you're a veteran, you get medical, but you don't get dental. Medicare will take care of medical, but it won't take care of dental."

According to Sarah Bedard Holland, CEO of Virginia Oral Health Care Coalition, "From a macro perspective, it is very difficult for adults without dental coverage to access dental services. Without a reimbursement source, it is very difficult for dentists to provide care to those who need it."

Many individuals in Greater Williamsburg volunteer their time and expertise to meet the oral health needs of individuals without dental insurance including the professionals at Norge Dental Center, a private dental practice that annually provides free care to as many individuals as it can see in a day.

"We know that Norge Dental Center is one of many private dental practices donating time and expertise to care for impoverished patients who need oral care. We wish we could recognize each and every one of those practices," said Clarence Wilson, chair of the annual awards committee of the board of trustees.

# 2018 Grants AWARDED

## GOAL ONE: Community Health Promotion

Promote lifelong wellness and informed individual choices for all who live in our community

A healthy life requires many factors that can determine one's overall health and well-being. At Williamsburg Health Foundation, we target grants to create a broad system of opportunities for all through our **Strategic Goals**.



### Grants to Support the Health of Children and Families

<b>Center for Child and Family Services, Inc.</b> <i>kidsandfamilies.com</i>	Violence Prevention and Intervention Program . . . . .	\$35,000
<b>Child Development Resources</b> <i>cdr.org</i>	Breastfeeding: Building Confidence and Competence . .	\$ 12,000
	Infant & Parent Program . . . . .	\$100,000
	Parents As Teachers (PAT). . . . .	\$ 84,000
<b>City of Williamsburg</b>	Child Health Initiative. . . . .	\$260,000
<b>James City County</b>	Child Health Initiative. . . . .	\$250,000



### Grants for Wellness Promotion

<b>The Arc of Greater Williamsburg</b> <i>thearcgw.org</i>	Fitness Program . . . . .	\$ 25,000
<b>Community Housing Partners</b> <i>communityhousingpartners.org</i>	Building Healthy Communities . . . . .	\$ 45,000
<b>One Child Center for Autism</b> <i>onechildcenterforautism.org</i>	Kids' Night . . . . .	\$15,000
<b>Williamsburg Soccer Foundation</b> <i>williamsburgsoccer.com</i>	Virginia Legacy Community Partnership Program . . . . .	\$ 20,000
<b>Williamsburg-James City County Public School Division</b> <i>wjccschools.org/our-schools/ship</i>	School Health Initiative Program (SHIP). . . . .	\$650,000



## CHILD HEALTH INITIATIVE

A child's health is linked to the health of the people caring for him or her. Acknowledging this fact requires a more complex approach to improving child health outcomes. The Child Health Initiative does the hard work of a multigenerational approach to improving the health and well-being of children and their families.

Guided by a Care Team working within either City of Williamsburg or James City County, families make critical progress towards greater health and well-being by overcoming complex challenges one challenge at a time. With help from home visitors, including a home-visiting nurse, children lead healthier lives as their caretakers improve their situations and their ability to care for their children.



## Grants for Access to Healthy Food



<b>Community Housing Partners</b> <i>communitypartnersva.com</i>	Mobile Food Pantry .....\$ 5,000
<b>Grove Christian Outreach Center</b> <i>groveoutreach.com</i>	Children's Summer Lunch Program .....\$ 5,000
<b>Peninsula Agency on Aging</b> <i>paainc.org</i>	Nutritious Noontime Meals.....\$50,000
<b>Virginia Peninsula Foodbank</b> <i>hrfoodbank.org</i>	Mobile Food Pantry: Fresh Produce Program.....\$ 20,000

## Grants for Information and Referral



<b>Colonial Behavioral Health</b> <i>colonialbh.org</i>	WMBGCARES.ORG Greater Williamsburg Network of Care (NOC) .....\$ 37,000
<b>Peninsula Agency on Aging</b> <i>paainc.org</i>	Aging and Disability Resource Center .....\$ 64,000

# 2018 Grants AWARDED

## GOAL TWO: Healthcare

Target resources to meet the healthcare needs of our most vulnerable community members

### CLINICS NEED DONOR SUPPORT

Local clinics remain a lifeline for the uninsured. Even with Medicaid expansion, experts estimate over 300,000 residents of Virginia will remain uninsured. These include individuals who make too much to receive Medicaid and, given the demands on their household income for housing, food, transportation, and other essentials, cannot afford insurance. These “working uninsured” can include families with a parent working a full-time job.



### Grants for Advanced Primary Care

<b>Angels of Mercy Medical Mission</b> <i>angelsofmercyclinic.org</i>	Chronic Care Collaborative .....	\$113,000
<b>Gloucester Mathews Care Clinic</b> <i>gmcareclinic.com</i>	Chronic Care Collaborative .....	\$200,000
<b>Lackey Clinic</b> <i>lackeyclinic.org</i>	Chronic Care Collaborative .....	\$400,000
<b>Olde Towne Medical &amp; Dental Center</b> <i>oldetownemedicalcenter.org</i>	Basic Operating Support .....	\$450,000
	Chronic Care Collaborative .....	\$250,000
	Improving Diabetic Self-Management through Health Coaching .....	\$ 30,000



### Grants for Behavioral Healthcare

<b>Center for Child &amp; Family Services, Inc.</b> <i>kidsandfamilies.com</i>	Multicultural Counseling and Outreach Program .....	\$ 40,000
<b>Colonial Behavioral Health</b> <i>colonialbh.org</i>	Advancing Opioid Addiction Treatment .....	\$ 40,000
	Chronic Care Collaborative .....	\$175,000
	Intensive Outpatient Program (IOP) .....	\$ 45,000
	Greater Williamsburg Child Assessment Center .....	\$271,000
<b>Elk Hill Farm, Inc.</b> <i>elkhill.org</i>	Elk Hill's School-Based Mental Health Program .....	\$ 20,000
<b>Postpartum Support Virginia, Inc.</b> <i>postpartumva.org</i>	Healthy Mother, Healthy Family .....	\$8,000
<b>William &amp; Mary School of Education , New Horizons Family Counseling Center</b> <i>education.wm.edu/centers/newhorizonspostpartumva.org</i>	Youth and Family Counseling Program .....	\$100,000





## MORE EXPENSES, NOT FEWER

Not currently accepting Medicaid but transitioning to do so in the future, a clinic faces significant one-time and ongoing expenses to meet federal and state standards. And, the reality remains that Medicaid reimbursement doesn't sufficiently cover the expenses to provide healthcare services. While it can provide a new income stream in the future, it is unlikely to ever make clinics independent of donor support.

Donor support continues to be essential to the very existence of our local clinics.

## Grants for Medication Access



### Rx Partnership

[rxpartnership.org](http://rxpartnership.org)

Access to Medication Program (AMP) .....	\$ 25,000
Chronic Care Collaborative .....	\$ 35,000

### Virginia Health Care Foundation

[vhcf.org](http://vhcf.org)

Greater Williamsburg Medication Access Program (GWMAP) .....	\$400,000
--------------------------------------------------------------	-----------

## Grants for Access to Healthcare Services



### Foundation For Rehabilitation Equipment & Endowment (FREE)

[free-foundation.org](http://free-foundation.org)

F.R.E.E. of Williamsburg .....	\$ 25,000
--------------------------------	-----------

### Greater Williamsburg Heartsafe Alliance

[heartsafewmbg.com](http://heartsafewmbg.com)

Greater Williamsburg Heartsafe Alliance .....	\$ 40,000
-----------------------------------------------	-----------

### The Doorways

[thedorways.org](http://thedorways.org)

Basic Operating Support .....	\$ 12,000
-------------------------------	-----------

### Literacy for Life at the Rita Welsh Adult Learning Center

[literacyforlife.org](http://literacyforlife.org)

Health Education and Literacy Program (HEAL) .....	\$ 50,000
----------------------------------------------------	-----------

### Williamsburg Area Faith in Action

[wfia.org](http://wfia.org)

Medical Transportation .....	\$ 50,000
------------------------------	-----------

### Peninsula Agency on Aging (PPA)

[paainc.org](http://paainc.org)

RIDES Program .....	\$110,000
---------------------	-----------

# 2018 Grants AWARDED

## GOAL THREE: Strengthening Agencies

Increase health opportunities by advocating for their consideration in community decisions and by strengthening agencies influencing health in our service area



With Medicaid Expansion going into effect January 1, 2019, Williamsburg Health Foundation partnered with the Virginia Health Care Foundation in 2018 to bring two all-day trainings on how to assist someone signing up for Medicaid with their application. Application “assisters” can be both volunteers and professionals in the health and human services fields. Williamsburg Health Foundation provided SignUpNow training for nearly 100 community members committed to helping others access health insurance.



**NETWORK  
PENINSULA**

*Because strong nonprofits  
are key to thriving communities*

In 2018, WHF gave a grant to NetworkPeninsula in support of its Nonprofit Management Institute. The Nonprofit Management Institute is a joint initiative of Thomas Nelson Community College and NetworkPeninsula. The goal of the Institute is to educate nonprofit professionals and equip them with best practices in all areas of nonprofit management, leadership, and development. The Institute is the first of its kind in Greater Williamsburg, and we are delighted to continue to support this important work.



### Grants to Build Agency Capacity

**Williamsburg Area Faith in Action**  
*wfia.org*

Support for a Development Director ..... \$ 42,000



### Small grants, research and evaluation, and annual award

Small grants, research and evaluation, and annual award .....\$225,000

---

**TOTAL AMOUNT OF GRANTS AWARDED FOR 2018 ..... \$4,833,000**

# WILLIAMSBURG HEALTH FOUNDATION

## Financial Summary

Sola Moniz  
Chief Financial Officer



Founded as a result of the 1996 merger of the Williamsburg Community Hospital and Sentara Healthcare Systems, Williamsburg Health Foundation is a private foundation often categorized as a “health legacy” or “hospital conversion.” Like most private foundations, WHF must distribute a minimum of five percent of its investments annually through grants and expenses related to our mission “... to enhance the health and well-being of people living in the Greater Williamsburg area.” The Foundation’s primary investment objective is to provide financial support to fulfill its mission in perpetuity. To achieve this, a return on investment of its assets must keep up with inflation, cover the cost of operations, and provide funds for distribution as grants.

Despite the slowdown in the global economy, Williamsburg Health Foundation remains committed to its mission and service area in the Greater Williamsburg community. We continually look for opportunities to maximize our impact through strategic collaborations and partnerships.

### Summary Statements of Financial Position (in thousands)

	2018	2017
<b>TOTAL ASSETS</b>	\$116,600	\$125,900
Liabilities: Grants and Other Accounts Payable	600	700
Unrestricted Net Assets	116,000	125,200
<b>LIABILITIES AND NET ASSETS</b>	\$116,600	\$125,900

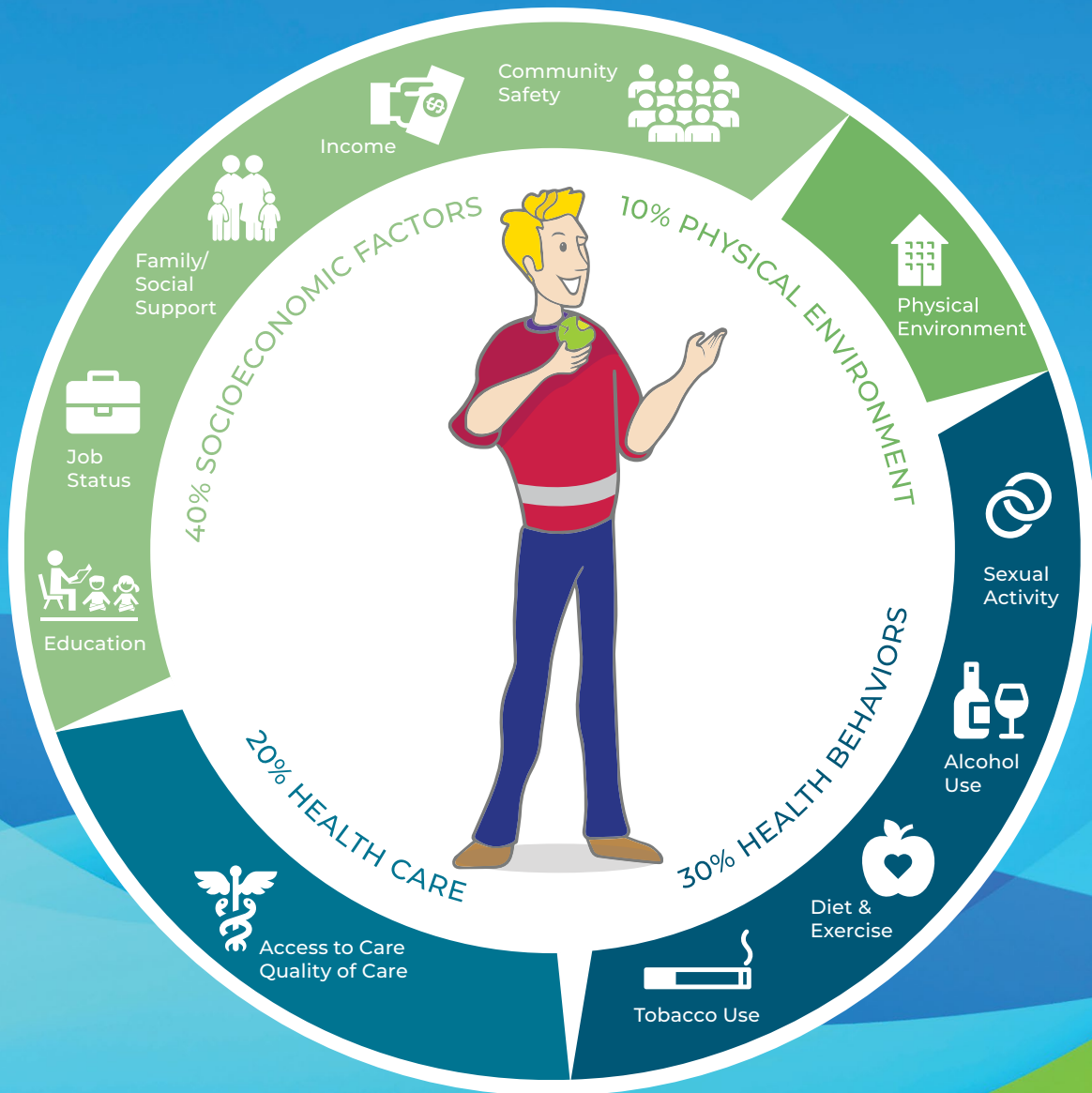
### Summary Statements of Activities (in thousands)

	Ended December 31	Ended December 31
<b>UNRESTRICTED REVENUE AND GAINS (LOSSES)</b>		
Investment Income and Gains (Losses), Net of Fees	\$(3,100)	\$15,600
<b>EXPENSES</b>		
Community Grants	4,800	4,600
Program, General and Administrative Expenses	1,400	1,400
Federal Excise and State Tax (Benefit) Expense	(100)	200
	6,100	6,200
<b>CHANGE IN NET ASSETS</b>	(9,200)	9,400
<b>NET ASSETS, BEGINNING OF YEAR</b>	125,200	115,800
<b>NET ASSETS, END OF YEAR</b>	\$116,000	\$125,200



WHF grants support a wide variety of programs addressing health disparities, encouraging wellness, promoting personal responsibility, and providing care.

## WHAT GOES INTO YOUR HEALTH?



## 2018 Board of Trustees

**M. Anderson  
Bradshaw**

*Attorney, M. Anderson  
Bradshaw, P.C.*

**David E. Bush**

*Managing Director,  
PBMares Wealth  
Management, LLC*

**Nancy N. Campbell**

*Chairman Emeritus,  
National Trust for  
Historic Preservation*

**Beth F. Davis**

*Director, Patient Care  
Services, Sentara  
Williamsburg Regional  
Medical Center*

**Paul W. Gerhardt**

*Shareholder; Member,  
Kaufman & Canoles  
Executive Committee;  
Managing Director,  
Kaufman & Canoles  
Richmond Office;  
Chair, Senior Housing  
& Care Team*

**Earl T. Granger, III**

*Associate Vice President  
for Development,  
William & Mary*

**Joyce M. Jarrett**

*Professor of English,  
Hampton University*

**Laura J. Loda**

*Retired Vice President,  
Human Resources,  
The Colonial Williamsburg  
Foundation*

**Richard H. Rizk**

*Judge, Circuit Court  
for York County and  
the City of Poquoson*

**Maribel O. Saimre**

*Director of Student  
Services, Virginia  
Department of Education*

**Robert J. Singley**

*President and Principle  
Broker, RJS &  
Associates, Inc.*

**Robert B. Taylor**

*Retired Senior Vice  
President for Finance  
and Administration,  
The Colonial Williamsburg  
Foundation*

**Thomas G. Tingle**

*President, Guernsey Tingle*

**Glenda H. Turner**

*Marketing Leader, Busch  
Gardens and Water  
Country USA*

**Jackson C. Tuttle, II**

*Retired City Manager,  
City of Williamsburg*

**Marshall N. Warner**

*Executive Vice President,  
Chesapeake Bank*

**Clarence A. Wilson**

*Retired Director of  
Finance, DuPont Company*

**Kimberly Zeuli**

*Sr. Vice President,  
Initiative for a Competitive  
Inner City (ICIC)*

**Chair**

**James R. Golden**

*Senior Counselor to the  
President, William & Mary*

**Vice Chair**

**Louis F. Rossiter**

*Research Professor,  
Program in Public Policy,  
William & Mary.*

**Secretary**

**Jeanne Zeidler**

*President & CEO,  
Williamsburg Health  
Foundation (January  
to May 2018)*

**Carol L. Sale**

*President & CEO,  
Williamsburg Health  
Foundation (May 2018  
to Present)*

## Vision

Individuals making healthy choices in a community with health opportunities for all.

## Mission

Inspire collaboration, mobilize resources, and encourage innovation to enhance the health and well-being of people living in Greater Williamsburg.

## Values

We are...bold innovators, responsible decision makers, evidence-based actors, collaborative partners.

## Strategic Statement

Provide resources in perpetuity to identify and communicate community health needs; serve as a catalyst for collaborative approaches to meet those needs; strengthen organizations to increase their impact; help fill gaps in the delivery of services to the most vulnerable populations; promote lifelong wellness; assess progress; and celebrate success in our service area.

**WILLIAMSBURG**  
**Health**  
**FOUNDATION**

**757.345.0912**

**[williamsburghealthfoundation.org](http://williamsburghealthfoundation.org)**

**4801 Courthouse Street, Suite 200  
Williamsburg, VA 23188**

