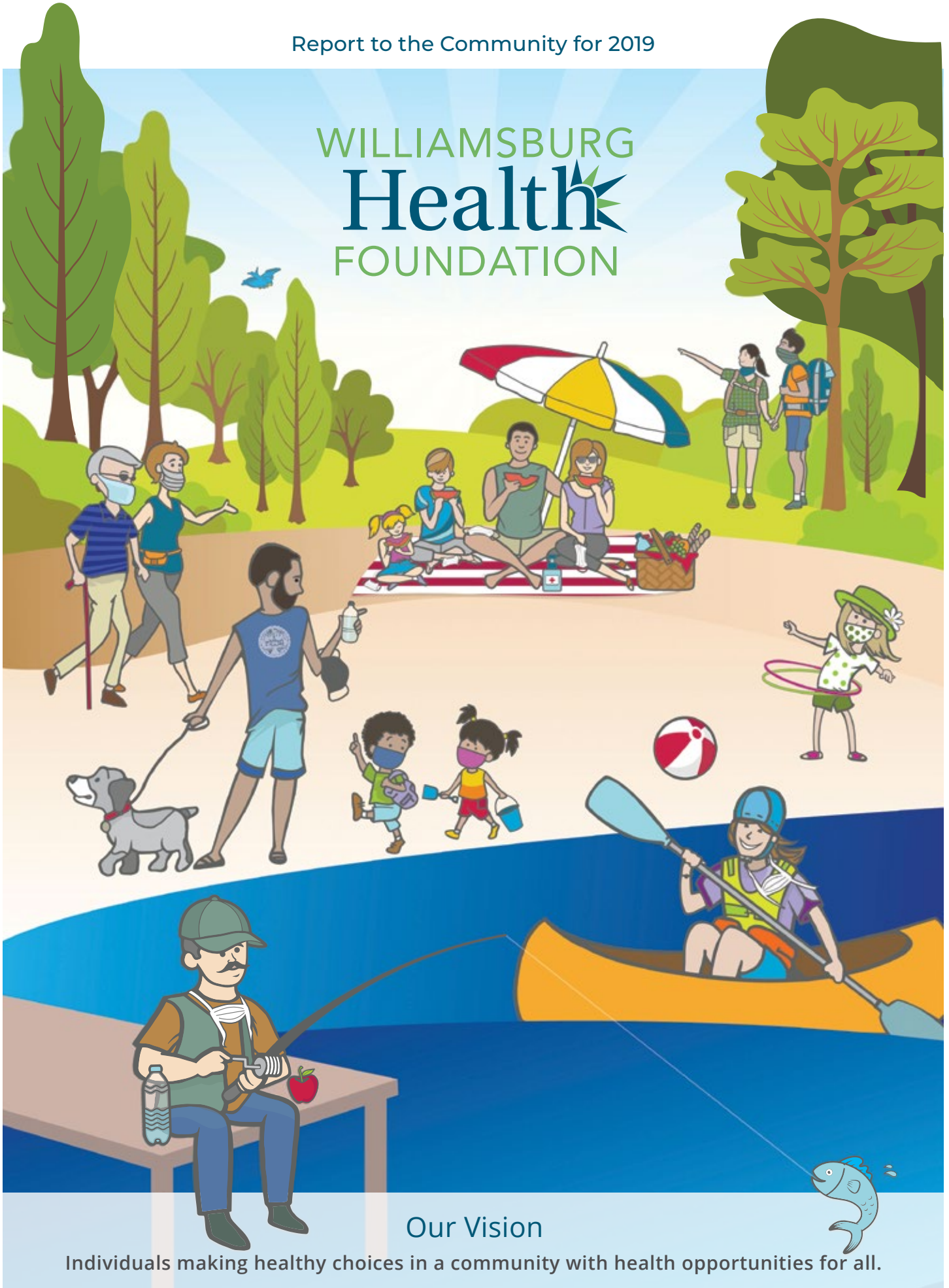


# WILLIAMSBURG Health FOUNDATION



## Our Vision

Individuals making healthy choices in a community with health opportunities for all.



Carol L. Sale, RN, MSN  
President & CEO

## An Introduction

This report from your local health foundation shares accomplishments for the year 2019. Publishing this report in *Next Door Neighbors* magazine allows us to reach nearly 44,000 households with details about our efforts to improve the health and well-being of everyone living in Greater Williamsburg.

**First and foremost**, 2019 was a year of change. We want to thank all the organizations and individuals in our community who worked to expand Medicaid to an additional 4,455 individuals in our area who needed and qualified for this new health coverage. (An additional 1,170 were added since 2019 through July of 2020).

**Second**, during 2019 we brought a sharper focus and significant financial investment to building the capacity of nonprofit organizations in our community to do the good work that they do.

We were delighted to fund access for 100 local organizations to Catchafire.org, a web platform that provides the skilled volunteers and pre-scoped projects that are critical to nonprofit success. The response was overwhelmingly positive, with nearly \$500,000 in projects and consulting calls completed by 50 organizations. We are pleased to say that the effort has been renewed for another year.

We also invested in the Nonprofit Management Institute, a joint venture between NetworkPeninsula and Thomas

Nelson Community College to provide ongoing education and certifications for nonprofit staff and board members. That program continues to strengthen local nonprofit leadership in 2020 and beyond.

**Third**, as a means of building our own toolbox of funding capabilities, our Board of Trustees approved two new policies connected to *Impact Investing and Advocacy*—policies that give us new options for using our funds in partnership with other funders to invest in transformative projects beyond traditional grantmaking.

As you will see in the pages of this report, in 2019 the Williamsburg Health Foundation made grants of nearly \$5 million. As always, we ask you to be part of our vision—a vision of individuals making healthy choices in a community with health opportunities for all. How? By supporting a local nonprofit organization through time or money; by making healthy choices for yourself, encouraging healthy behavior by example; and by advocating for the health of the community as a whole.

And, now, a few thoughts on 2020 . . .

## ... About 2020

The COVID-19 virus did not threaten our community until 2020. But we would be remiss if we did not acknowledge the tremendous creativity, flexibility, and effort that so many people, especially frontline caregivers, have shown since this March. Greater Williamsburg organizations collaborated to provide daily necessities and to deliver healthcare.



A handwritten signature in black ink that reads "Louis F. Rossiter".

Louis F. Rossiter  
*Chair, Board of Trustees*

To give partner organizations maximum flexibility to meet their most immediate needs and challenges related to COVID-19, we unrestricted over 2.5 million dollars in existing grants. We have also assisted with collaboration and communication so organizations in the community can avoid duplication of effort and achieve evermore strategic and equitable distribution of resources.

We look forward to sharing a full report on our COVID-19 work of 2020 in next year's

Report to the Community. We will also celebrate the resiliency of our community with a video coming to [www.williamsburghealthfoundation.org](http://www.williamsburghealthfoundation.org) in October. Please stay tuned.

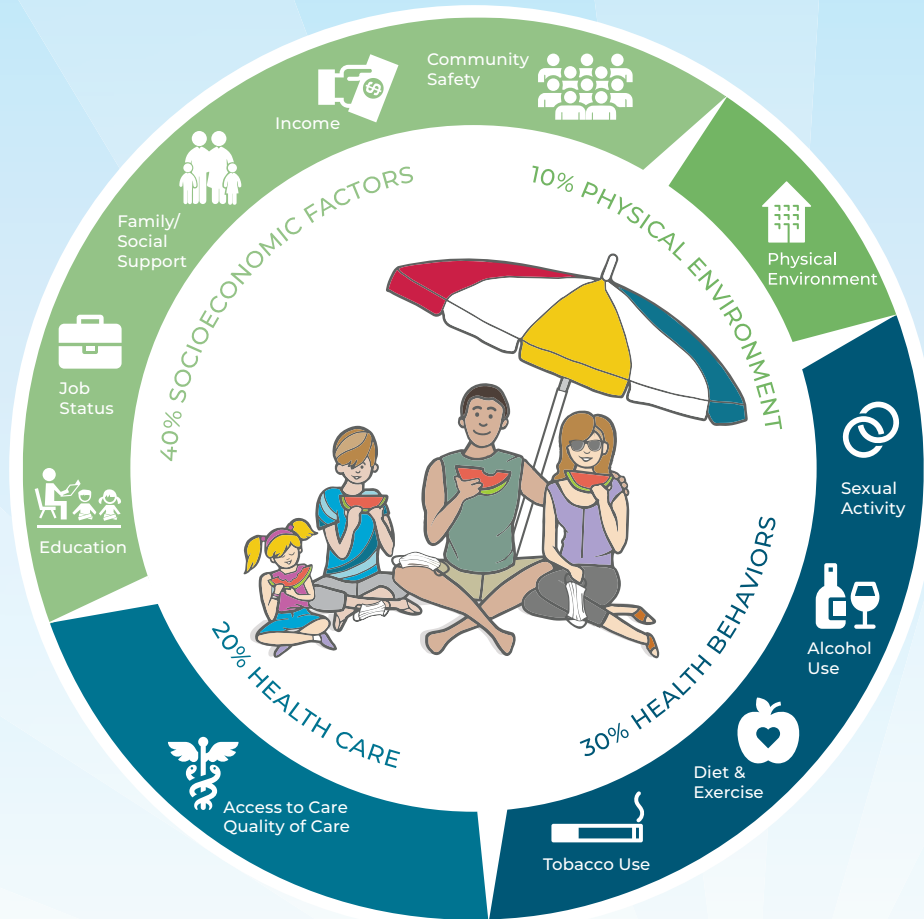
Until then, please wear your mask to protect those around you and yourself; and be well.

— CLS & LFR





## What goes into your health?



Has your life been impacted by Covid-19?  
Find the nearby help and services you need.

**LOCAL  
RESOURCES  
MAP**

Find free food,  
medical care, Wifi,  
and much more.



<https://qr.go.page.link/LmvYa>

Available in Spanish:  
<https://qr.go.page.link/NUvMi>



## HIGHLIGHTED IMPACT OF MEDICAID EXPANSION IN GREATER WILLIAMSBURG 2019 Annual Awards

On October 30, 2019, the Williamsburg Health Foundation hosted over 150 people at our annual awards breakfast to highlight the impact of Medicaid expansion on the community. Our guest speaker was Commissioner S. Duke Storen of the Virginia Department of Social Services which oversees Medicaid enrollment.



S. Duke Storen  
*Virginia Department of Social  
Services Commissioner*

The event gave special recognition to local departments of Social Services for their work to enroll residents of Greater Williamsburg in health insurance.

In a video featured at the breakfast, local Medicaid recipients, social workers, and healthcare executives all explained the impact of Medicaid expansion from their perspectives.

Beth Shisler, a Williamsburg-area mom and medical aide who suffered with debilitating migraines, used her newly acquired Medicaid to see physician specialists. "I found out I was allergic to gluten and soy and yeast," she said. With a diagnosis and maintenance medications, Shisler can now control her migraines. "I'm more capable, and so much happier," she said.

Lynette Diaz, a social worker with James City

County noted "when individuals are able to receive the care that they need, there's less incidence of a ripple effect of other needs. What we see in our work, is that if the physical health and the mental health is being addressed it lays the foundation to be able to address things like employment and housing stability."

Mary Slade, RN, a home-visiting nurse with the City of Williamsburg, pointed out that if parents have access to healthcare, they "feel better, they have greater energy to take care of their children. The children are sick less, the children go to school more, and they get to participate in outside activities. It just creates a more vibrant community for everyone."

To watch the video shared at the annual awards, visit [youtube.com/user/WburgCommunityHealth](https://youtube.com/user/WburgCommunityHealth)



## GOAL

Promote lifelong wellness and  
informed individual choices for  
all who live in our community.



## Grants to Support the Health of Children and Families

<b>Center for Child and Family Services, Inc.</b> <i>kidsandfamilies.com</i>	Violence Prevention and Intervention Program	\$35,000
<b>Child Development Resources</b> <i>cdr.org</i>	Breastfeeding: Building Confidence and Competence	\$ 6,000
	Infant & Parent Program	\$100,000
	Parents As Teachers (PAT)	\$ 84,000
<b>City of Williamsburg</b>	Child Health Initiative	\$260,000
<b>James City County</b>	Child Health Initiative	\$275,000



## Grants for Access to Healthy Food

<b>Community Housing Partners</b> <i>communitypartnersva.com</i>	Mobile Food Pantry	\$ 5,000
<b>Peninsula Agency on Aging</b> <i>paainc.org</i>	Nutritious Noontime Meals	\$65,000
<b>Virginia Peninsula Foodbank</b> <i>hrfoodbank.org</i>	Mobile Food Pantry: Fresh Produce Program	\$ 25,000
<b>Williamsburg House of Mercy, Inc.</b> <i>williamsburghouseofmercy.org</i>	Mobile Food Pantry	\$ 12,000

## Assessing How We Work: Grantee Perception Report

Early in 2020, WHF engaged the Center for Effective Philanthropy, a national organization helping funders to assess and improve effectiveness and impact, to complete a grantee perception report. Our goal was to better understand our work from the grantees' point of view so we can more effectively support grantee partners. A confidential online survey resulted in candid feedback.

The report revealed potential areas for growth. We learned our lines of communication need to be enhanced to increase trust, mutual respect, and understanding. Going forward, we will communicate more consistently and meet more frequently with all grantees.

2019 Grants Awarded

### Grants for Wellness Promotion



<b>The Arc of Greater Williamsburg</b> <i>thearcgv.org</i>	Fitness Program	\$ 30,000
<b>Bacon Street Youth and Family Services</b> <i>baconstreet.org</i>	The Bridges Project	\$ 36,000
<b>One Child Center for Autism</b> <i>onechildcenterforautism.org</i>	Kids' Night	\$11,500
<b>Williamsburg Soccer Foundation</b> <i>williamsburgsoccer.com</i>	Virginia Legacy Community Partnership Program	\$ 20,000
<b>Williamsburg-James City County Public School Division</b> <i>wjccschools.org/academics/ship</i>	School Health Initiative Program (SHIP)	\$670,000

### Grants for Information and Referral



<b>Colonial Behavioral Health</b> <i>colonialbh.org</i>	WMBGCARES.ORG Greater Williamsburg Network of Care (NOC)	\$ 37,000
<b>Peninsula Agency on Aging</b> <i>paainc.org</i>	Greater Williamsburg Aging and Disability Resource Center	\$ 70,000



### Grants for Advanced Primary Care

<b>Angels of Mercy Medical Mission</b> <i>angelsofmercyclinic.org</i>	Chronic Care Collaborative	\$85,000
<b>Gloucester Mathews Care Clinic</b> <i>gmcareclinic.com</i>	Chronic Care Collaborative	\$200,000
<b>Lackey Clinic</b> <i>lackeyclinic.org</i>	Chronic Care Collaborative	\$400,000
<b>Olde Towne Medical &amp; Dental Center</b> <i>oldetownemedicalcenter.org</i>	Chronic Care Collaborative	\$250,000
	Improving Diabetic Self-Management through Health Coaching	\$ 20,000
	Support for Clinic Operations	\$450,000



### Grants for Behavioral Healthcare

<b>Center for Child &amp; Family Services, Inc.</b> <i>kidsandfamilies.com</i>	Neurofeedback Counseling Program	\$ 13,000
	Multicultural Counseling and Outreach Program	\$ 40,000
<b>Colonial Behavioral Health</b> <i>colonialbh.org</i>	Chronic Care Collaborative	\$175,000
	Greater Williamsburg Child Assessment Center	\$271,000
	Intensive Outpatient Program (IOP)	\$ 50,000
<b>Elk Hill Farm, Inc.</b> <i>elkhill.org</i>	Elk Hill's York County School-Based Mental Health Program	\$ 15,000
<b>Postpartum Support Virginia, Inc.</b> <i>postpartumva.org</i>	Greater Williamsburg Maternal Mental Health Coalition	\$8,000
<b>William &amp; Mary School of Education , New Horizons Family Counseling Center</b> <i>education.wm.edu/centers/newhorizons</i>	Youth and Family Counseling Program	\$95,000



# Assessing How We Work: Grantee Perception Report

The report suggested that WHF possesses a deep understanding of Greater Williamsburg, and that our funding priorities reflect the needs of area residents. Perhaps our greatest strength is the proportion of grantees that report benefiting from non-monetary assistance such as facilitated collaboration, research, professional development, and more. We thank the organizations that made completion of this survey a priority.



2019 Grants Awarded

## Grants for Medication Access



<b>Rx Partnership</b> <i>rxpartnership.org</i>	Access to Medication Program (AMP)	\$ 25,000
	Chronic Care Collaborative	\$ 35,000
<b>Virginia Health Care Foundation</b> <i>vhcf.org</i>	Greater Williamsburg Medication Access Program (GWMAP)	\$378,000

## Grants for Access to Healthcare Services



<b>The Doorways</b> <i>thedorways.org</i>	Basic Operating Support	\$ 15,000
<b>Foundation For Rehabilitation Equipment &amp; Endowment (FREE)</b> <i>free-foundation.org</i>	F.R.E.E. of Williamsburg	\$ 26,000
<b>Greater Williamsburg Heartsafe Alliance</b> <i>heartsafewmbg.com</i>	Greater Williamsburg Heartsafe Alliance	\$ 30,000
<b>Literacy for Life at the Rita Welsh Adult Learning Center</b> <i>literacyforlife.org</i>	Health Education and Literacy Program (HEAL)	\$ 55,000
<b>Peninsula Agency on Aging (PAA)</b> <i>paainc.org</i>	RIDES Program	\$120,000
<b>Williamsburg Area Faith in Action</b> <i>wfia.org</i>	Medical Transportation	\$ 50,000



Increase health opportunities by advocating for their consideration in community decisions and by strengthening agencies influencing health in our service area.



### Grants to Build Agency Capacity

<b>NetworkPeninsula</b> <i>networkpeninsula.org</i>	Nonprofit Management Institute	\$ 30,000
<b>One Child Center for Autism</b> <i>onechildcenterforautism.org</i>	Capacity Building	\$ 20,000
<b>Williamsburg Area Faith in Action</b> <i>wfia.org</i>	Support for a Development Director	\$ 28,000



### Small grants, research and evaluation, and annual awards

Small grants, research and evaluation, and annual awards	\$341,397
--	-----------

<b>TOTAL AMOUNT OF GRANTS AWARDED FOR 2019</b>	<b>\$4,966,897</b>
--	--------------------

## Access Williamsburg: One Call for Older Adults



A partnership between the Peninsula Agency on Aging (PAA) and the Williamsburg Area Transit Authority (WATA), Access Williamsburg empowers adults over 60 and individuals with disabilities to access fully coordinated transportation scheduling. Instead of calling around, individuals make one call to 757-920-5800. We are proud to have helped with Access Williamsburg—an important step toward utilizing community resources efficiently, reducing duplication of services, and supporting aging in place.

## WHF Financial Summary

The Foundation's primary investment objective is to provide financial support to fulfill its mission in perpetuity. To achieve this, a return on investment of its assets must keep up with inflation, cover the cost of operations, and provide funds for distribution as grants. 2019 program-related expenses increased by \$400,000 over the prior year, including \$4.97 million in grants to local nonprofits.



**Sola Moniz**  
*Chief Financial Officer*

### Summary Statements of Financial Position (in thousands)

As of December 31

	2019	2018
<b>TOTAL ASSETS</b>	\$128,500	\$116,600
Liabilities: Grants and Other Accounts Payable	700	600
Unrestricted Net Assets	127,800	116,000
<b>LIABILITIES AND NET ASSETS</b>	\$128,500	\$116,600

### Summary Statements of Activities (in thousands)

Ended December 31

#### UNRESTRICTED REVENUE AND GAINS (LOSSES)

Investment Income and Gains (Losses), Net of Fees	\$18,300	\$(3,100)
<b>EXPENSES</b>		
Community Grants	5,000	4,800
Program, General and Administrative Expenses	1,412	1,400
Federal Excise and State Tax (Benefit) Expense	88	(100)
	6,500	6,100
<b>CHANGE IN NET ASSETS</b>	11,800	(9,200)
<b>NET ASSETS, BEGINNING OF YEAR</b>	116,000	125,200
<b>NET ASSETS, END OF YEAR</b>	\$127,800	\$116,000

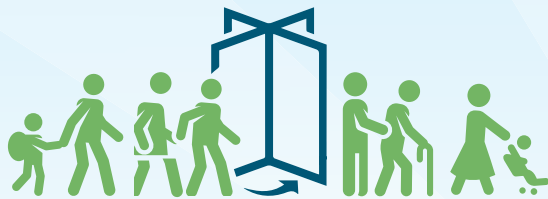
## Assessing our Impact

Here are some quick facts and figures on outputs from grants made in the calendar year 2018. We use facts like these as just one part of our ongoing work to understand and assess our impact on the community. Not all our work can be quantified, but we believe this information helps illustrate one aspect of our community impact. *Note: While this publication is our Community Report for 2019, these facts are from 2018 because of time lag for data gathering and aggregating.*



### CHILD AND FAMILY INTERVENTION

**900+** people  
served



**14,395** encounters  **1,716** hours



### ADVANCED PRIMARY CARE

**6,800+** people  
served



**45,538**  
patient visits

### BEHAVIORAL HEALTHCARE SERVICES



**500+** people  
served



**19,528**  
hours of  
assessment  
or therapy

### MEDICATION ACCESS



**2,500+** people  
served



**41,941**  
30-day filled  
prescriptions



## Vision

Individuals making healthy choices in a community with health opportunities for all.

## Mission

Inspire collaboration, mobilize resources, and encourage innovation to enhance the health and well-being of people living in Greater Williamsburg.

## Values

We are...bold innovators, responsible decision makers, evidence-based actors, collaborative partners.



757.345.0912

[williamsburghealthfoundation.org](http://williamsburghealthfoundation.org)

4801 Courthouse Street, Suite 200  
Williamsburg, VA 23188

## 2019 Board of Trustees

### **M. Anderson Bradshaw**

*Attorney, M. Anderson Bradshaw, P.C.*

### **David E. Bush**

*Managing Director,  
PBMares Wealth Management, LLC*

### **Beth F. Davis**

*Director, Patient Care Services,  
Sentara Williamsburg Regional  
Medical Center*

### **Paul W. Gerhardt**

*Shareholder; Member, Kaufman  
& Canoles Executive Committee;  
Managing Director, Kaufman &  
Canoles Richmond Office*

### **Earl T. Granger, III**

*Chief Development Officer and  
Vice President of Development, The  
Colonial Williamsburg Foundation*

### **Laura J. Loda**

*Retired Vice President, Human  
Resources, The Colonial Williamsburg  
Foundation*

### **Kelli Mansel-Arbuckle**

*Retired Human Resources Director,  
The Colonial Williamsburg  
Foundation*

### **Douglas J. Myers**

*Portfolio Management Director,  
Morgan Stanley*

### **Maribel O. Saimre**

*Director of Student Services,  
Virginia Department of Education*

### **Robert J. Singley**

*President and Principle Broker,  
RJS & Associates, Inc.*

### **Steven R. Staples**

*Executive Professor, Part-Time,  
School of Education, The College  
of William and Mary*

### **Robert B. Taylor**

*Retired Senior Vice President for  
Finance and Administration, The  
Colonial Williamsburg Foundation*

### **Thomas G. Tingle**

*President, Guernsey Tingle*

### **Glenda H. Turner**

*Marketing Leader, Busch Gardens  
and Water Country USA*

### **Clarence A. Wilson**

*Retired Director of Finance,  
DuPont Company*

### **Alfred L. Woods**

*Former Chairman,  
Aegion Corporation*

### **Chair**

### **Louis F. Rossiter**

*Research Professor, Program in  
Public Policy, William & Mary.*

### **Immediate Past Chair**

### **James R. Golden**

*Senior Counselor to the President,  
William & Mary*

### **Vice Chair**

### **Jackson C. Tuttle, II**

*Retired City Manager,  
City of Williamsburg*

### **Treasurer**

### **Marshall N. Warner**

*Executive Vice President,  
Chesapeake Bank*

### **Secretary**

### **Carol L. Sale**

*President & CEO,  
Williamsburg Health Foundation*